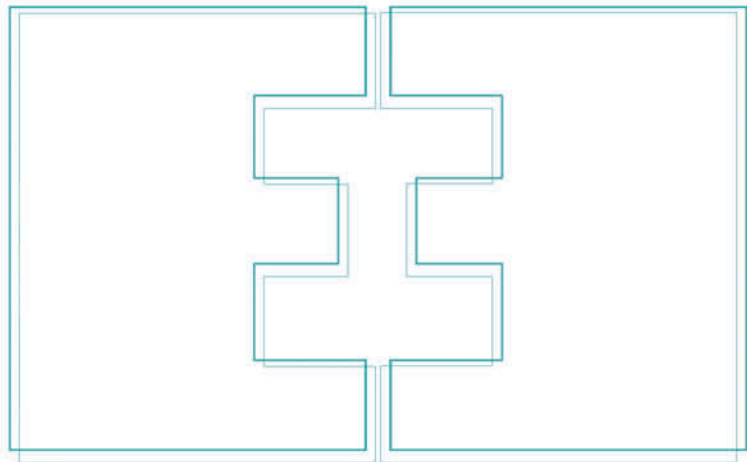


SERENITY



EVELYN EARNEST, INC.



EVELYN EARNEST, INC.

P.O. BOX 425
 EDEN, NC 27288
 P. 336-627-0170
 F. 336-627-0526
 E. SAMPLES@EVELYNEARNEST.COM
 WWW.EVELYNEARNEST.COM

SERENITY TECHNICAL DATA

	CONTENT	REPEAT	WIDTH	WEIGHT	ABRAISION	DESIGN
DANDE	100% POLY	4.938"V 4.813"H	55.25"	1.03 LB/YD	60,000	RAILROADED
DIVINE	41.78% RAYON 36.32% POLY 21.49% COTTON 0.41% NYLON	3.438"V 0.00"H	56.5"	1.12 LB/YD	30,000	RAILROADED
ENTENDRE	62% POLY 23.26% RAYON 14.35% COTTON	6.92"V 4.5"H	55.75"	0.96 LB/YD	51,000	RAILROADED
HOBNAIL	71.26% RAYON 28.74% POLY	0.00"V 0.280"H	55"	1.25 LB/YD	51,000	RAILROADED
INTERSECTION	100% POLY	2.813"V 2.5"H	54.5"	1.36 LB/YD	51,000	CUTRITE
SHURKEN	100% POLY	4.375"V 3.750"H	56.25"	1.09 LB/YD	51,000	CUTRITE
TISSUE BLOCK	43.25% RAYON 56.75% POLY	0.313"V 0.00"H	56.5"	1.43 LB/YD	51,000	CUTRITE

CLEANING CODE S:
 ENTENDRE

CLEANING CODE W:
 DANDE / DIVINE / HOBNAIL / INTERSECTION / SHURIKEN / TISSUE BLOCK

FINISH: CRYPTON

FLAMMABILITY: CAL. TB 117 SEC. E, CLASS 1

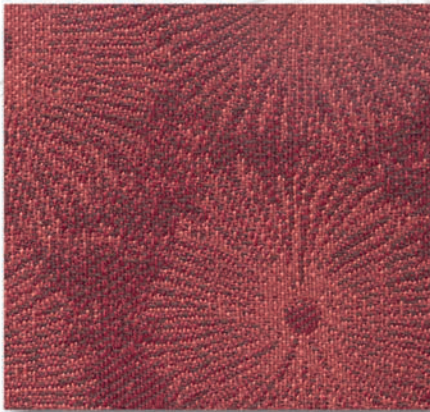
UFAC CLASS 1

Meets and exceeds ACT standards

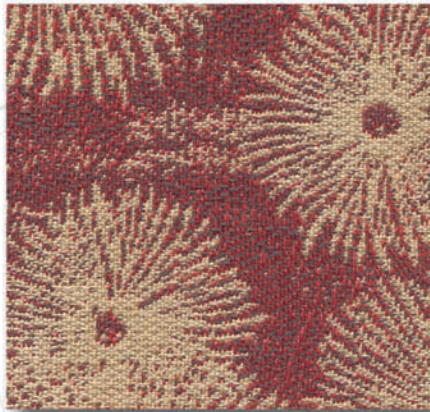


FABRIC SAMPLES ARE READILY AVAILABLE UPON REQUEST.
 CALL, FAX, OR ORDER SAMPLES ONLINE AT WWW.EVELYNEARNEST.COM

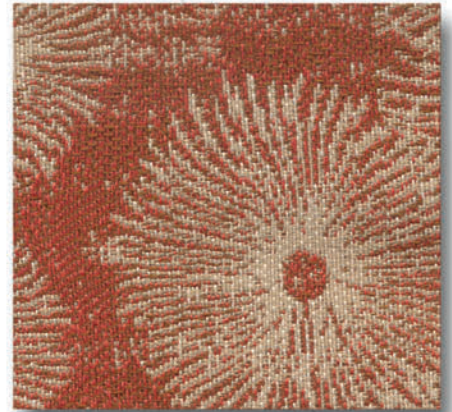
SLIGHT COLOR DIFFERENCES MAY EXIST BETWEEN PRINTED IMAGES AND ACTUAL FABRICS.



POPPY



SCARLET



SPICE

DANDE

CONTENT: 54.55% POLY / 45.45% PCR POLY

FINISH:  CRYPTON®

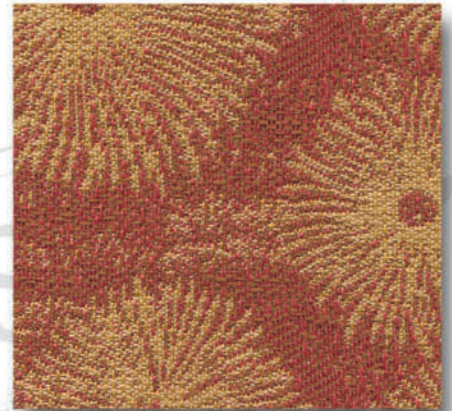
REPEAT: 4.938"V x 4.813"H

WIDTH: 55.25"

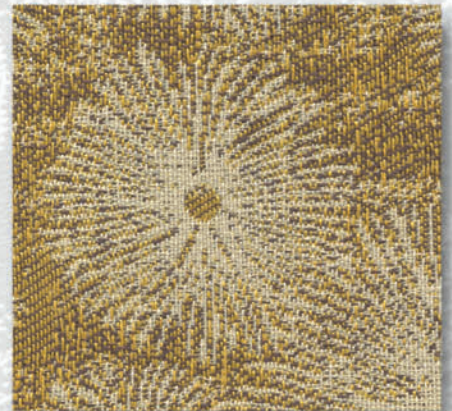
ABRASION: 60,000

DIRECTION: CUTRITE

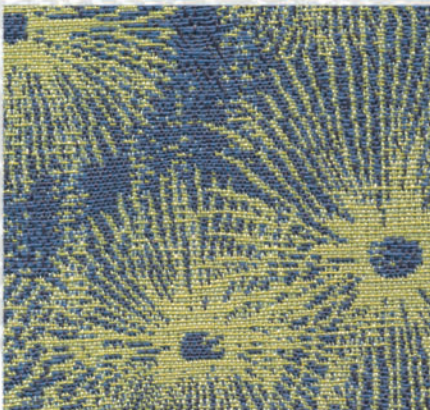
ADDITIONAL COLORWAYS ON NEXT PAGE



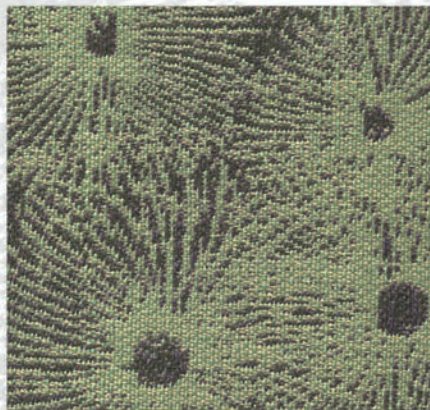
PUMPKIN



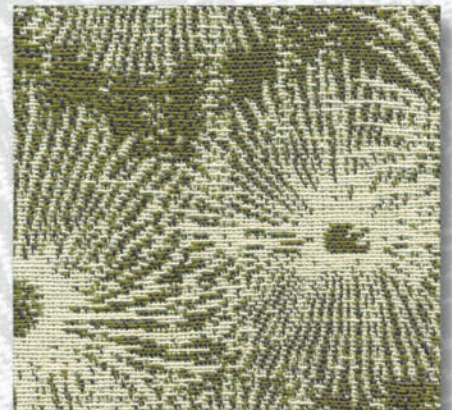
ORE



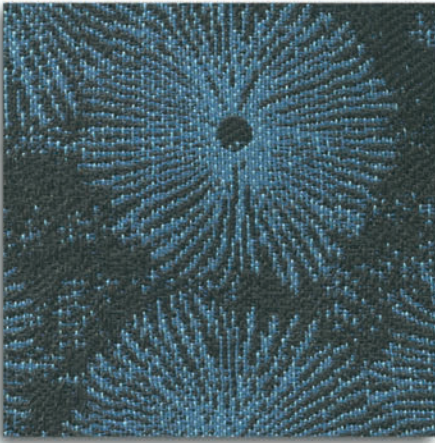
POOL



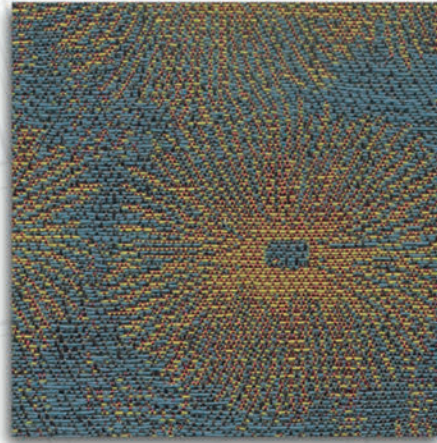
LAWN



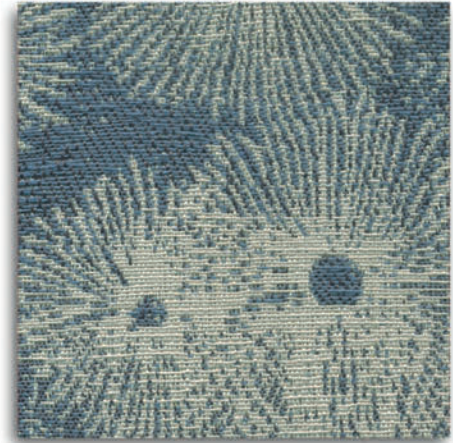
MOSS



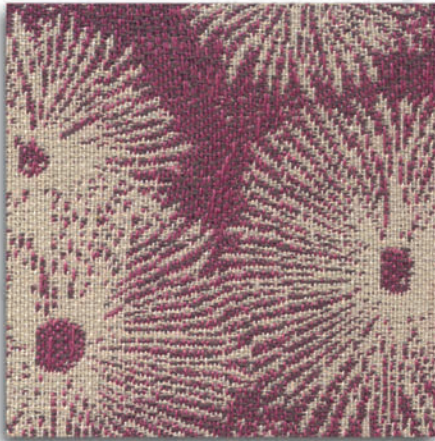
LAKE



BELVEDERE



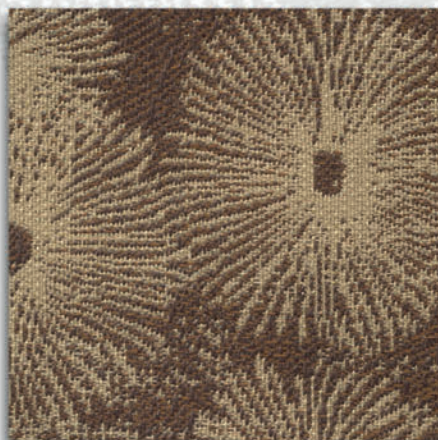
AQUAMARINE



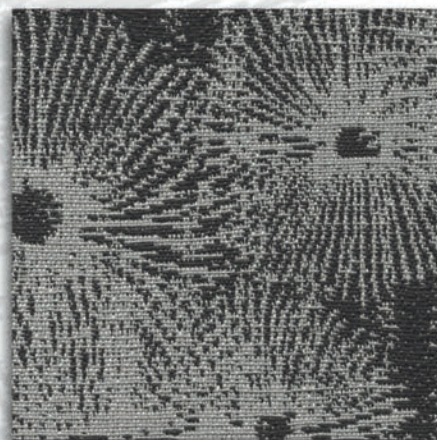
BOYSENBERRY



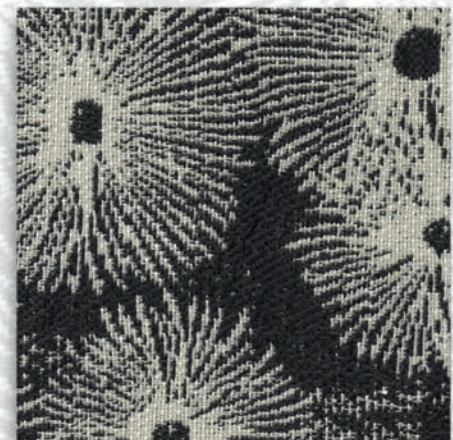
PARCHMENT



TERRAIN



CHARCOAL



NIGHT

DANDE

CONTENT: 54.55% POLY / 45.45% PCR POLY

FINISH:  CRYPTON®

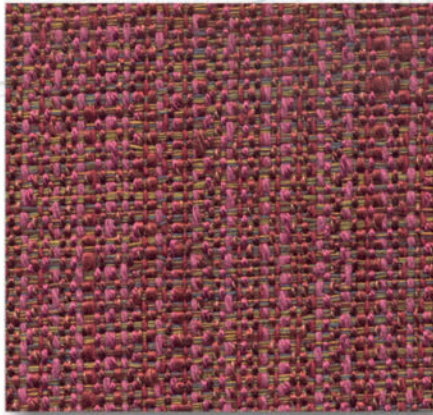
REPEAT: 4.938"V x 4.813"H

WIDTH: 55.25"

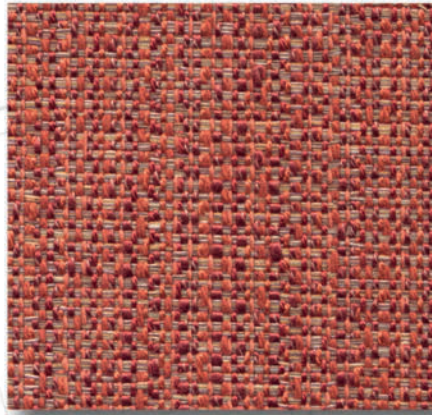
ABRASION: 60,000

DIRECTION: CUTRITE

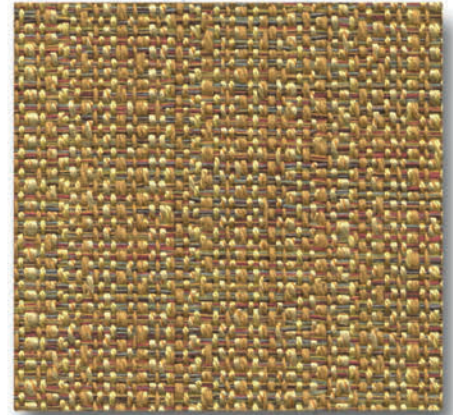
ADDITIONAL COLORWAYS ON PREVIOUS PAGE



RASPBERRY



POPPY



GOLDENROD

DIVINE

CONTENT: 41.78% RAYON / 36.32% POLY
21.49% COTTON / 0.41% NYLON

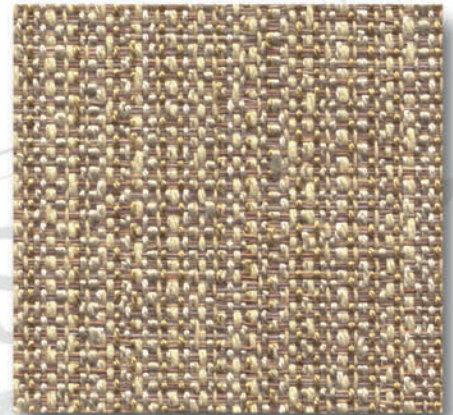
FINISH:  CRYPTON®

REPEAT: 3.438"V x 0.00"H

WIDTH: 56.5"

ABRASION: 30,000

DIRECTION: RAILROADED



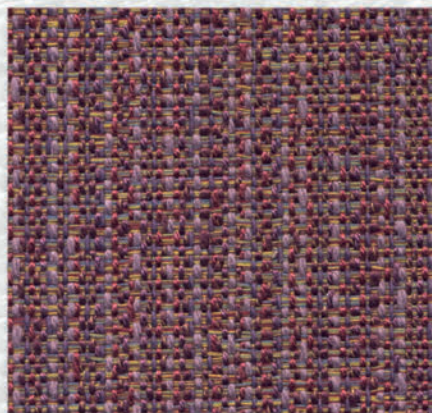
STRAW



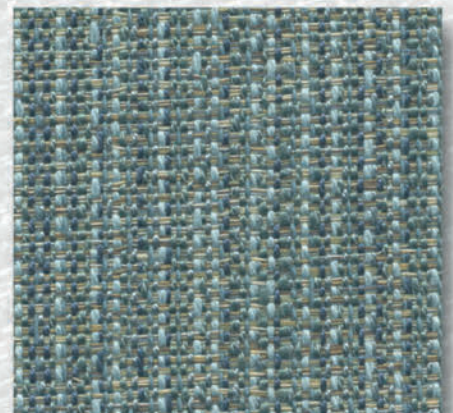
LIMEADE



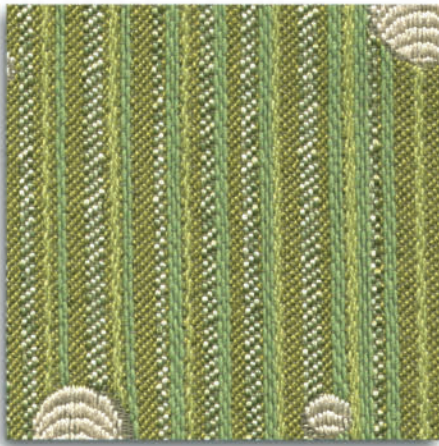
COCOA



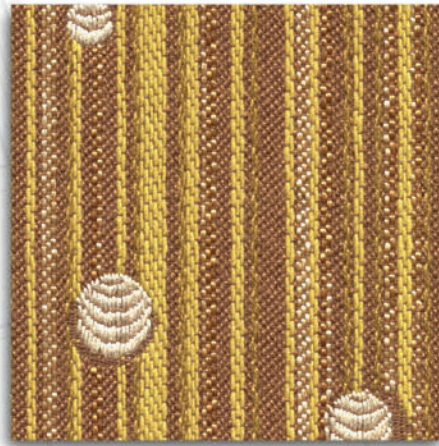
EGGPLANT



SPA



LIMEADE



TOPAZ



PUMPKIN



EMERALD

ENTENDRE

CONTENT: 38.62% POLY / 23.77% PCR POLY
23.26% RAYON / 14.35% COTTON

FINISH:  CRYPTON®

REPEAT: 6.92"V x 4.5"H

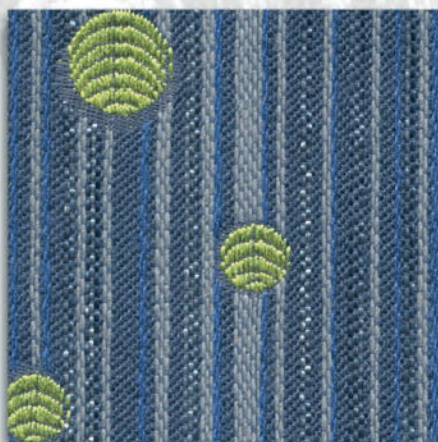
WIDTH: 55.75"

ABRASION: 51,000

DIRECTION: RAILROADED



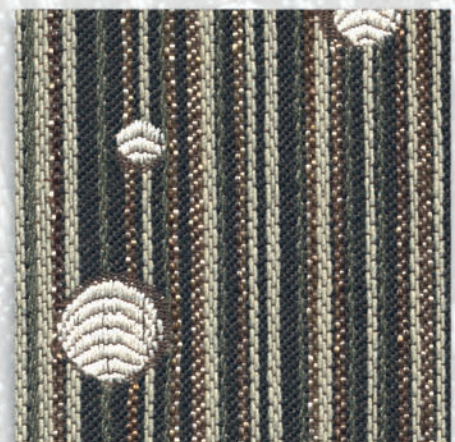
ATLANTIS



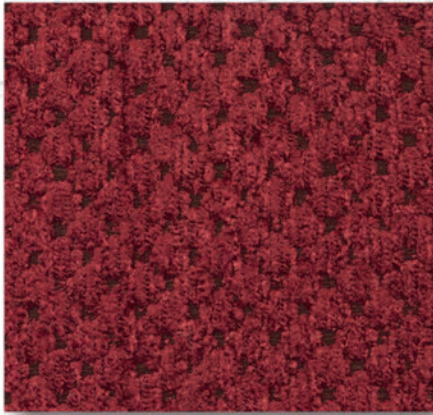
POOL



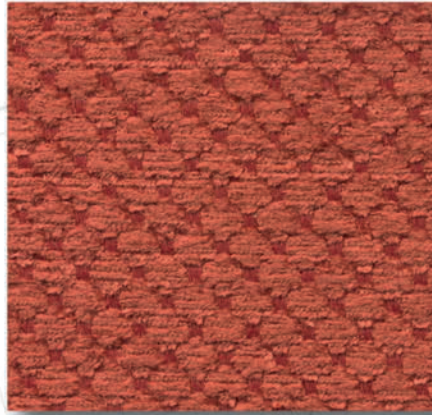
PLUM



CHARCOAL



BRICK



POPPY



SAND

HOBNAIL

CONTENT: 71.27% RAYON / 25.15% POLY
2.33% PIR POLY / 1.25% PCR POLY

FINISH:  CRYPTON®

REPEAT: 0.00"V x 0.280"H

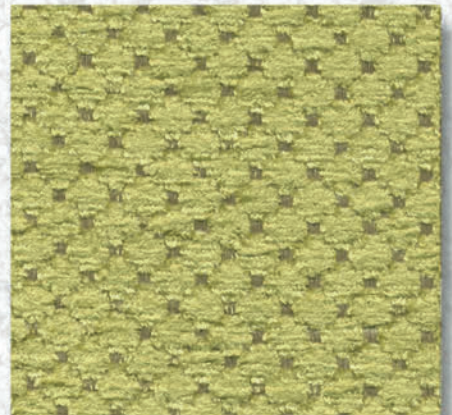
WIDTH: 55"

ABRASION: 51,000

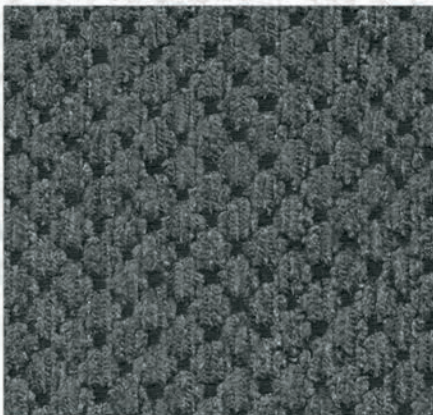
DIRECTION: RAILROADED



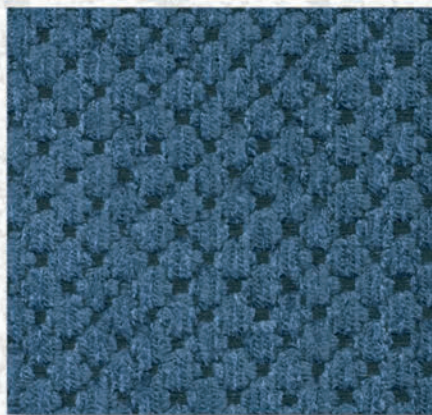
STRAW



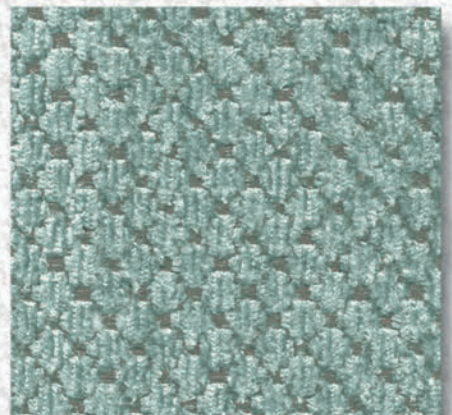
LIMEADE



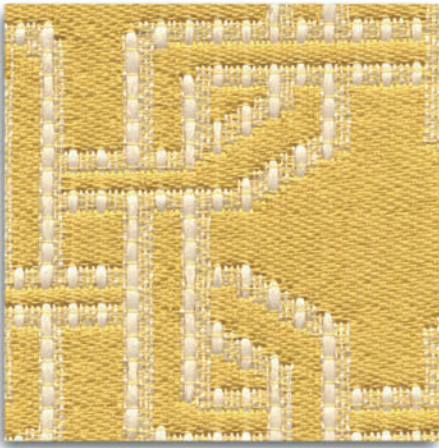
CHARCOAL



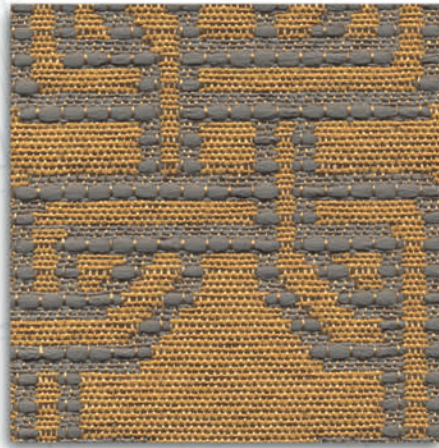
MIDNIGHT



SPA



SUNFLOWER



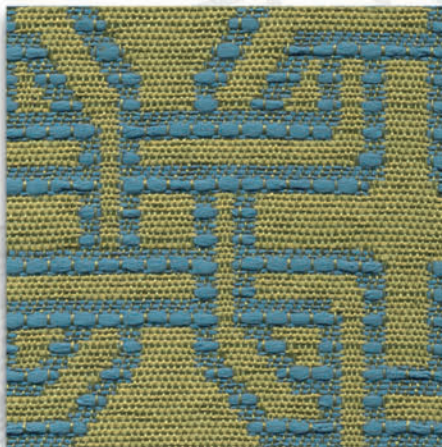
RUST



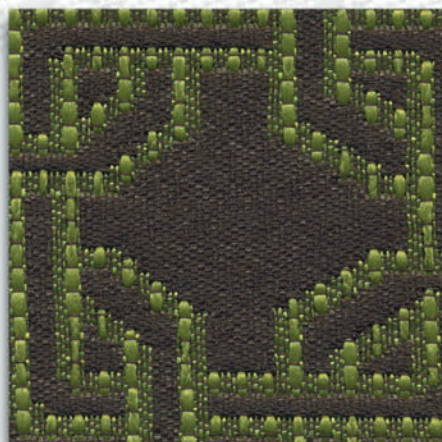
POPPY



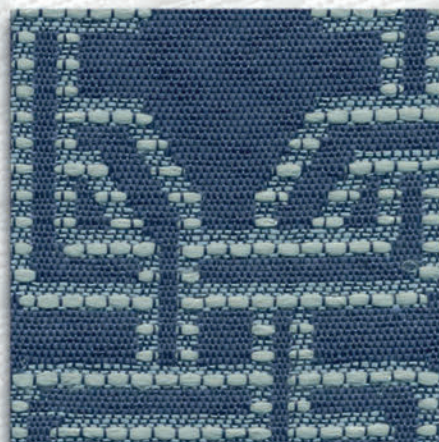
KIWI



LAWN



STALLION



MIDNIGHT



STRAW

INTERSECTION

CONTENT: 75.01% PIR POLY / 24.99% PCR POLY

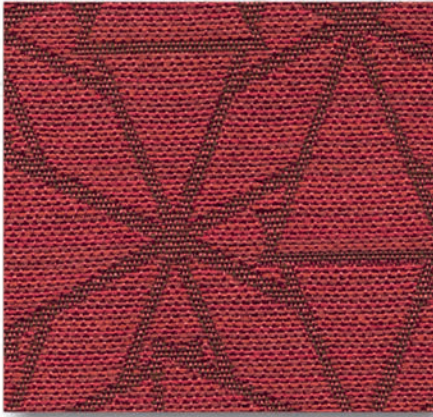
FINISH:  CRYPTON[®]

REPEAT: 2.813"V x 2.5"H

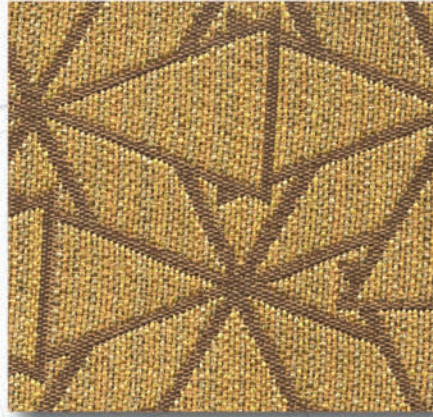
WIDTH: 54.5"

ABRASION: 51,000

DIRECTION: CUTRITE



BRICK



SUNFLOWER



SAND

SHURIKEN

CONTENT: 72.30% PCR POLY / 27.70% PIR POLY

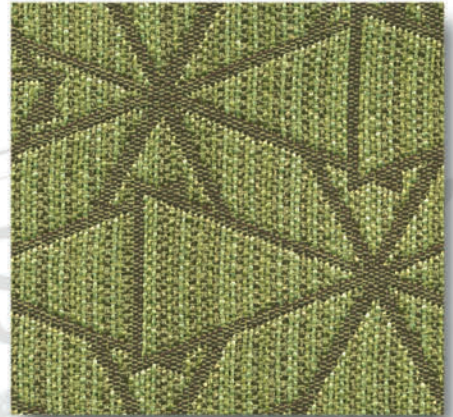
FINISH:  CRYPTON®

REPEAT: 4.375"V x 3.750"H

WIDTH: 56.25"

ABRASION: 51,000

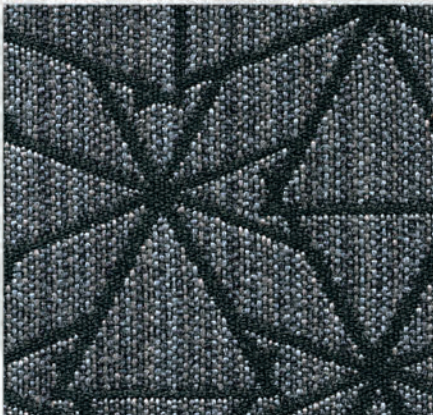
DIRECTION: CUTRITE



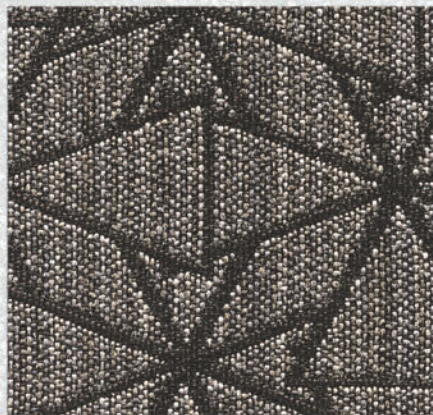
KIWI



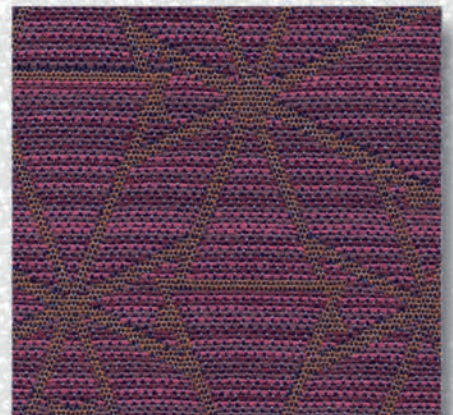
MIDNIGHT



GRAPHITE



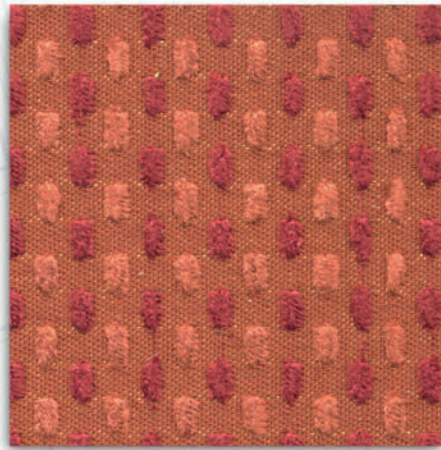
CHOCOLATE



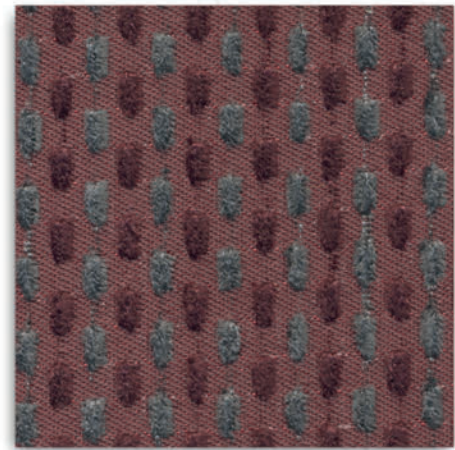
BOYSENBERRY



TOPAZ



POPPY



MULBERRY



SUNBLAST

TISSUE BLOCK

CONTENT: 43.25% RAYON / 56.75% POLY

FINISH:  CRYPTON®

REPEAT: 0.313"V x 0.00"H

WIDTH: 56.5"

ABRASION: 51,000

DIRECTION: CUTRITE



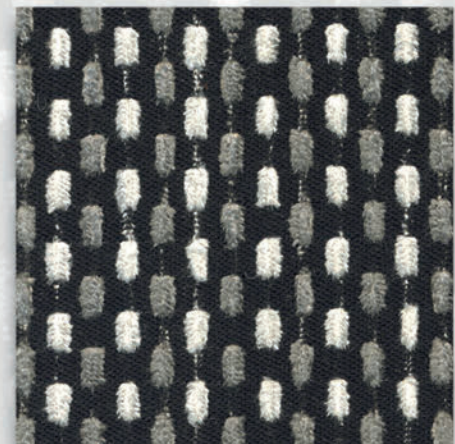
STRAW



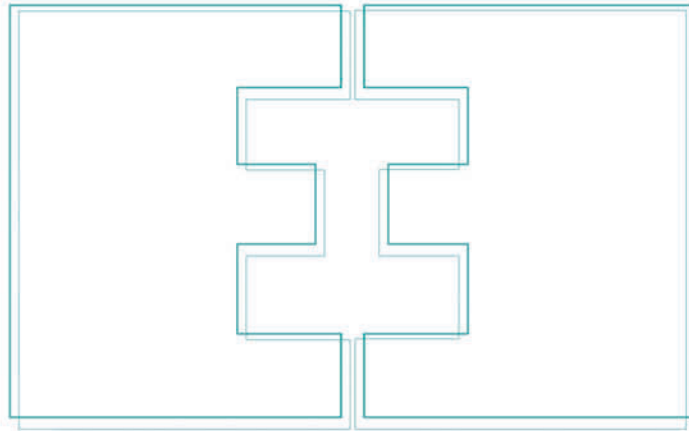
LIMEADE



NIGHT SKY



MIDNIGHT



EVELYN EARNEST, INC.

P.O. BOX 425

EDEN, NC 27288

P. 336-627-0170

F. 336-627-0526

E. SAMPLES@EVELYNEARNEST.COM

WWW.EVELYNEARNEST.COM

FABRIC SAMPLES ARE READILY AVAILABLE UPON REQUEST.
CALL, FAX, OR ORDER SAMPLES ONLINE AT WWW.EVELYNEARNEST.COM

SLIGHT COLOR DIFFERENCES MAY EXIST BETWEEN PRINTED IMAGES AND ACTUAL FABRICS.